

# VARIETY PROFILE: FENOPURE (FP-1)

<b>Variety:</b>	<b>FENOPURE (FP-1)</b>
<b>Type:</b>	Hybrid (Indica / Sativa)
<b>Gender:</b>	Feminized (99.9+%)
<b>Origin:</b>	Switzerland / Spain
<b>Germination rate:</b>	+95%
<b>Suitable type of cultivation:</b>	Indoor/Greenhouse/Outdoor
<b>Sowing time outdoor:</b>	After last frost
<b>Harvest time outdoor:</b>	Late September / Early October
<b>Flowering period:</b>	8-9 weeks
<b>Flower yield:</b>	700-900 lbs/acre of quality CBG flower (4000 plants per acre, 3.5 months on field)
<b>Biomass yield:</b>	2600-3500 lbs/acre of CBG biomass (4000 plants per acre, 3.5 months on field)
<b>THC monitoring:</b>	Not necessary

## High CBG with THC remaining below 0,2%

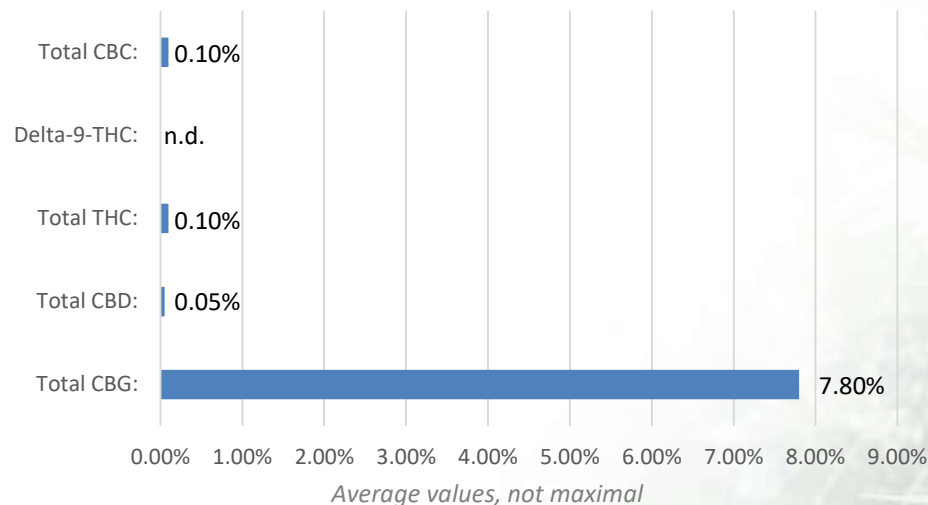
CBG is the precursor from which all other cannabinoids are synthesized, which is why it's often referred to as the "mother" or "stem cell" of cannabinoids. This unique property imbues CBG with enormous therapeutic promise, making it a subject of great interest for researchers and consumers alike. The fact that isolated CBG is currently worth between 5x to 10x more than CBD makes this seed a real match-winner.

FENOPURE FP-1 is a highly productive variety which solely produces the cannabinoid CBG. It grows fast, has a highly branched structure and a resinous, dense flower. The FP-1 is suitable for both flower and biomass production. In all trials, this variety has never run

This variety is specifically suitable for jurisdictions allowing only very low THC contents in hemp. No THC monitoring or early harvest required.

In the field this variety is ideal for as little hand labor as possible. Seeds can be drilled in after the last frost – however, we always recommend giving them a head start by germinating them 2 ½-4 weeks in a greenhouse before transplanting them in the field.

Cannabinoid profile FENOPURE FP-1



# CANNABINOID PROFILE: FENOPURE (FP-1)



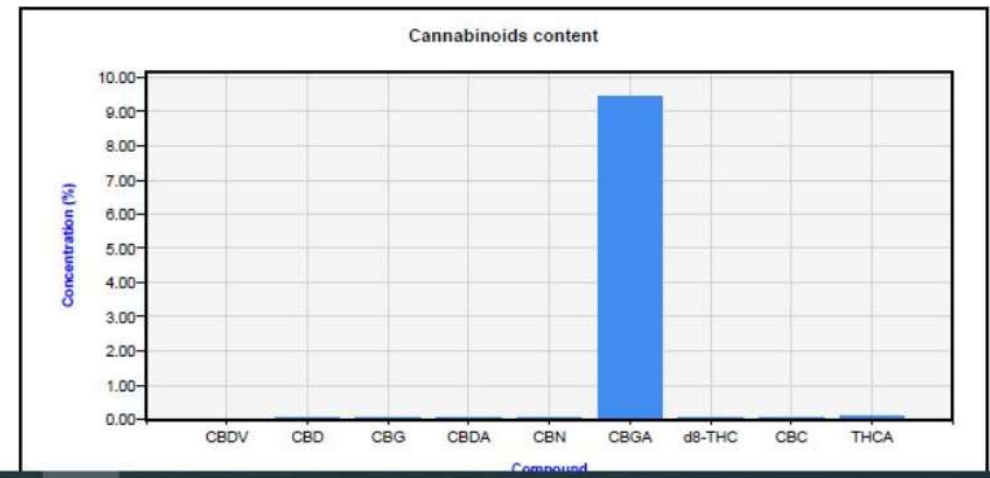
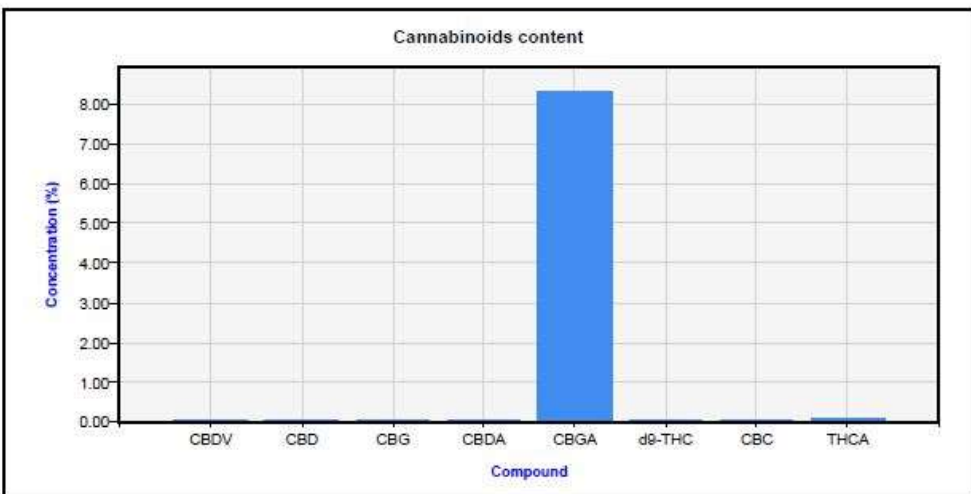
**Description:** Outdoor, flower  
**Sample amount:** 502.4 mg  
**Injection volume:** 1.000 ul  
**Acq. method:** Cannabinoids EVO C18

**Analysis method:** 12Cannabinoids\_EVO\_Quant\_ESTD\_800\_Dani\_CC\_new\_191125\_wo\_BPCA.pmx

Name	RT [min]	Area	Amount [mg]	Concentration [%]	Peak Purity
CBDV	2.144	2.9992	0.001	0.0249	782.3
CBDVA					
THCV					
CBD	3.417	3.4018	0.001	0.0340	992.6
CBG	3.599	1.5423	0.000	0.0069	924.5
CBDA	3.815	5.6650	0.001	0.0355	992.1
CBN					
CBGA	4.398	1218.2082	0.278	8.3036	1000.0
d9-THC	4.509	0.6876	0.000	0.0067	874.2
d8-THC					
CBC	5.306	5.7587	0.001	0.0226	997.2
THCA	6.047	10.8830	0.003	0.0855	994.1

**Analysis method:** 12Cannabinoids\_EVO\_Quant\_ESTD\_800\_Dani\_CC\_new\_191125\_wo\_BPCA.pmx

Name	RT [min]	Area	Amount [mg]	Concentration [%]	Peak Purity
CBDV	2.156	0.6303	0.000	-0.0006	
CBDVA					
THCV					
CBD	3.445	3.7832	0.001	0.0210	999.7
CBG	3.621	8.7020	0.003	0.0531	999.4
CBDA	3.850	10.3860	0.002	0.0385	997.2
CBN	4.193	1.7397	0.000	0.0023	999.6
CBGA	4.426	2531.9187	0.578	9.4502	999.9
d9-THC					
d8-THC	4.897	2.5748	0.001	0.0205	
CBC	5.346	11.4935	0.002	0.0282	997.9
THCA	6.097	15.0859	0.004	0.0662	979.7



# TERPENE PROFILE: FENOPURE (FP-1)

RESULTATE RÉSULTATS/ RISULTATI/ RESULTS

## Terpenauszug

	%-w/w
alpha-Pinene	<0.05%
Camphene	<0.05%
(-)-beta-Pinene	<0.05%
Myrcene	<0.05%
3-Carene	<0.05%
alpha-Terpinene	<0.05%
(R)-(+)-Limonene	<0.05%
Ocimene Isomer 1	<0.05%
Ocimene Isomer 2	<0.05%
p-Cymene	<0.05%
gamma-Terpinene	<0.05%
Terpinolene	<0.05%
(-)-Isopulegol	<0.05%
Geraniol	<0.05%
(-)-trans-Caryophyllene	<0.05%
Nerolidol Isomer 1	<0.05%
Nerolidol Isomer 2	<0.05%
(-)-alpha-Bisabolol	<0.05%
(-)-alpha-Terpineol	<0.05%
(+)- Cedrol	<0.05%
(+)-Borneol	<0.05%
(+)-Citronellal	<0.05%
(+)-Fenchol	<0.05%
(1R)-(+)-Camphor	<0.05%
(R)-(+)-Pulegone	<0.05%
alpha-Humulene	<0.05%
Citral Isomer 1	<0.05%
Citral Isomer 2	<0.05%
Citronellol	<0.05%
Geranyl acetate	<0.05%
Isoborneol	<0.05%
L-Fenchone	<0.05%
Linalool	<0.05%
Menthol	<0.05%
Phytol Isomer 1	<0.05%
Phytol Isomer 2	0.06%
Triethyl Citrate	<0.05%

**0.11%-w/w**

Gesamtgehalt/ Contenu total/  
Contenuto totale/ Total content

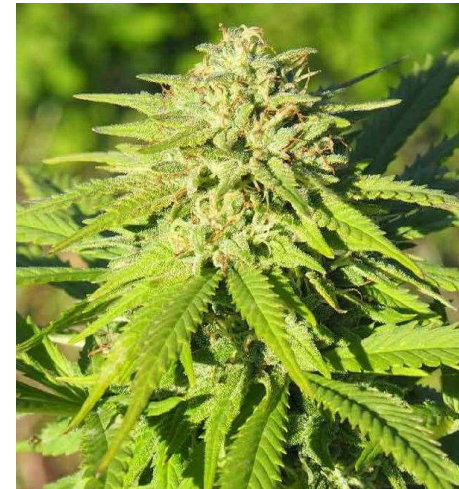
Limit of quantification (LOQ)  
\*\* < 0.05%-w/w



# GROWTH & FLOWERING PROFILE: FENOPURE (FP-1)



1) CBG Indoor cultivation: flowering phase



2) CBG Outdoor cultivation: 2 weeks prior to harvest



3) CBG indoor: freshly trimmed flower

FENOCAN PhytoGenetics Ltd.  
Seestrasse 2  
6205 Eich  
Switzerland

T: +41 41 419 10 10  
[contact@fenocan.com](mailto:contact@fenocan.com)